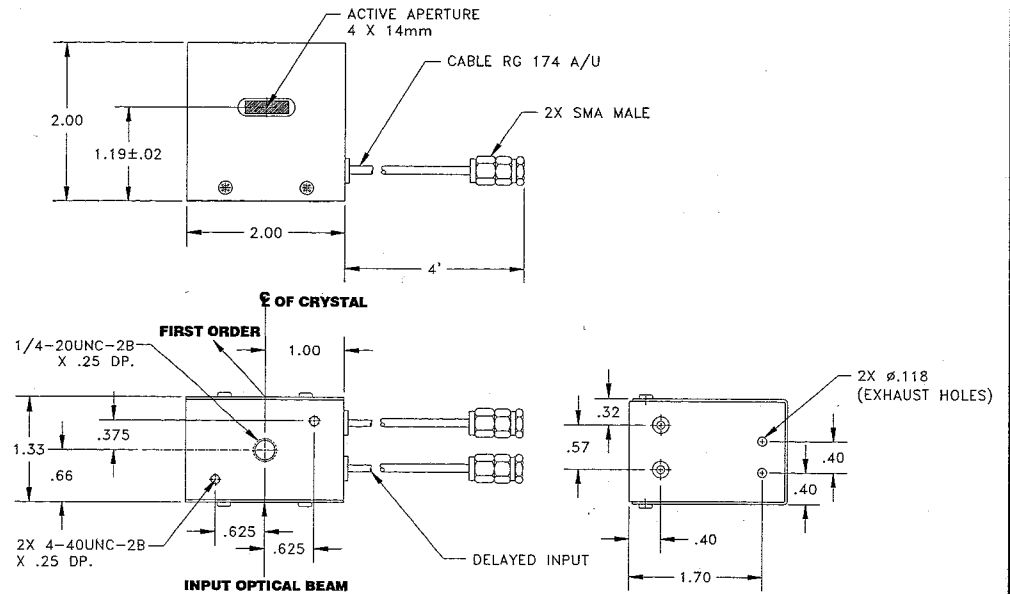


SPECIFICATIONS

AO Medium	TeO2
Acoustic Mode	Slow Shear, (110 Axis)
Acoustic Velocity	0.617 mm/μs
Wavelength	633-670 nm
Input Polarization	Elliptical
Output Polarization	Elliptical
Insertion Loss	<3%
Center Frequency (Fc)	80 MHz
RF Bandwidth	50 MHz
RF Power	< 1.2 Watts
Active Aperture	4 mm 'H' X 14 mm 'L'
Average Diffraction Efficiency	%
Flatness Across Bandwidth	%
Min Diffraction Efficiency	>50%
Peak Valley at 633 mm	<0.125
RMS at 633 mm	N/A
VSWR	2.0 : 1
Scan Angle	N/A
Time Bandwidth	1100

OUTLINE DRAWING



DOCUMENT CONTROL

MAR 08 2005

Notes:

1. Phased array input transducer.
2. Input impedance is 50 Ohms.

THIS DOCUMENT IS THE PROPERTY OF CRYSTAL TECHNOLOGY, INC. IT IS NOT TO BE REPRODUCED OR DISCLOSED IN WHOLE OR IN PART OTHER THAN BY EMPLOYEES OF CRYSTAL TECHNOLOGY AND ITS CONTRACTED REPRESENTATIVES AND DISTRIBUTORS. ANY EXCEPTION REQUIRES THE WRITTEN CONSENT OF AN AUTHORIZED REPRESENTATIVE OF CRYSTAL TECHNOLOGY.

TOLERANCES: .XX .XXX	DR	Tom Ng 3/8/2005	Crystal Technology, Inc.		
MATERIAL:	CHK	<i>R. Dwyer 3/1/05</i>	DESCRIPTION: AODF 4080-18		
FINISH:	APP		PART NUMBER:	REV:	SHEET 1 OF 1
	APP	<i>PER ED 14355</i>	97-02850-01	A	