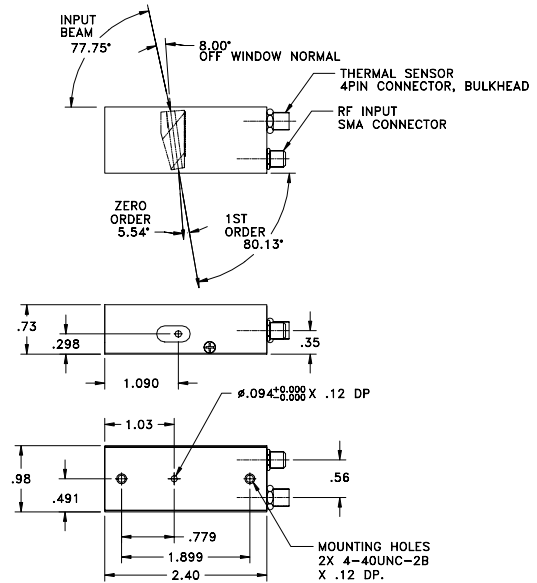


SPECIFICATIONS

AO Medium	TeO2
Acoustic Velocity	.68 mm/μs
Active Aperture*	2.5 mm Dia
RF Frequency Range	80-152 MHz
RF Bandpass (FWHM)	280MHz @ 476 nm
Wavelength Range	430-670 nm
VSWR	2.0:1 Max
Input Impedance	50 Ohms Nominal
Insertion Loss	3 % Max
Temperature Sensitivity	.05 nm/C
Diffacted Beam Collinearity, min deviation	.01 degrees
Input Optical Polarization	Vertical
Output Optical Polarization	Horizontal
Max RF Power (8 Freq)	1 watt

Outline Drawing: Package 97-02827-01



For Reference Only

Notes:
 Simultaneous Diffraction, any 8 wavelengths
 Random Wavelength Access Time: < 1.5 usec (1 mm Beam Diameter)

THIS DOCUMENT IS THE PROPERTY OF CRYSTAL TECHNOLOGY, INC. IT IS NOT TO BE REPRODUCED OR DISCLOSED IN WHOLE OR IN PART OTHER THAN BY EMPLOYEES CRYSTAL TECHNOLOGY AND ITS CONTRACTED REPRESENTATIVES AND DISTRIBUTERS. ANY EXCEPTION REQUIRES THE WRITTEN CONSENT OF AN AUTHORIZED REPRESENTATIVE OF CRYSTAL TECHNOLOGY.

Special Testing	Min	Units	Max
Optical Efficiency, (per wavelength input divergence < 2 mrad)	90	%	

*Active Aperture: Aperture over which performance specifications apply.

TOLERANCES: .XX ± .01 .XXX ± .005	DR	J.D. Kump 8/4/2005	Crystal Technology, Inc.	
MATERIAL:	CHK			DESCRIPTION: AOTF PCAOM 80-152 MHz Vert. Pol.
FINISH:	APP			
	APP		PART NUMBER: 97-02827-01	
			REV: B	
			SHEET 1 OF 1	